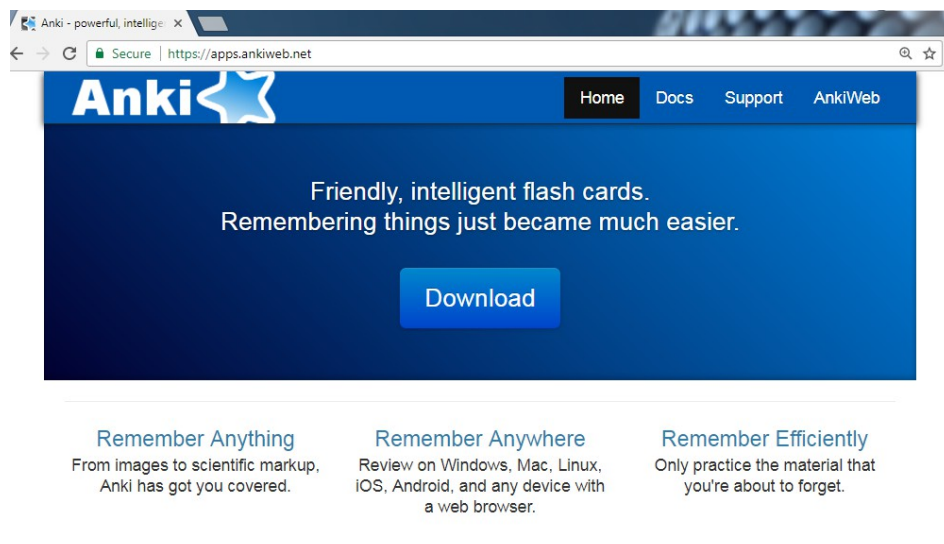


Step 1:

Visit <https://apps.ankiweb.net/> and click the “Download” button.



It will bring you down to the following menu:

Download Anki

Windows

Mac

Linux/BSD

iPhone/Android

Development

Other

Download Anki for Windows Vista/7/8/10 (2.0.47)

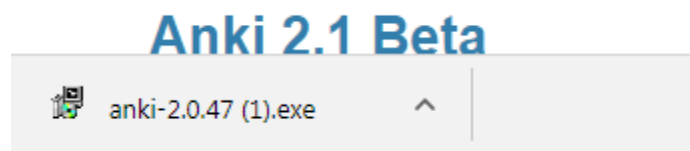
Windows XP users, please use the alternate version below.

Installation

1. Save the installer to your desktop or downloads folder.
2. Double-click on the installer to run it. Anki will be installed to your computer.
3. Double-click on the new Anki icon on your desktop to start Anki.
4. If you receive the error "The application has failed to start because the configuration is incorrect", please install [this Microsoft library](#).

Click the appropriate operating system and then click “Download Anki for Operating System”

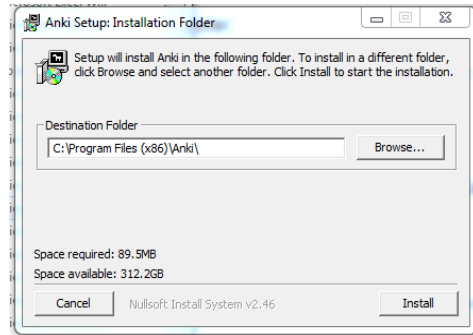
2. Right click the file and select “Open”.



This may bring up a warning saying “Do you want to allow the following program from an unknown publisher to make changes to this computer?”.

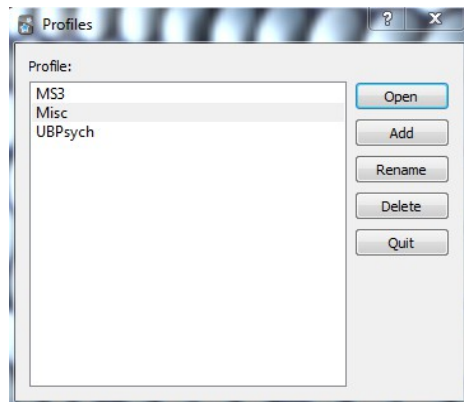
Select “Yes”

3. Click “Install”



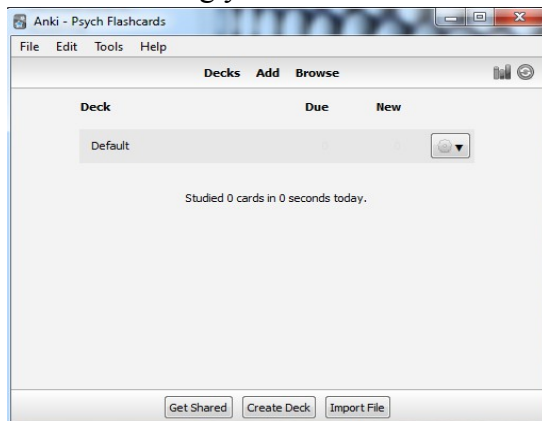
5. Search your programs for “Anki” and open the program.

6. Create a new profile by clicking the “Add” button, name your new profile and then hit “Okay”. Then double click on your new profile.



Please note MS3, Misc, and UBPpsych are profiles I made previously and will appear on your profile list.

7. This will bring you to this screen



8. Return to UB Psychiatry → Downloads → Anki Flashcards

<https://ubwp.buffalo.edu/psychsignbuffalo/download/anki-flashcards/>

And then select the deck you wish to download.

Anki Flashcards

Psychiatry Rx Basics

9. This will bring you to the Ankiweb Page to download the deck

UB Psych RX Simple

<10kB, 0 audio & 0 images. Updated 2017-09-14.

Based on 0 ratings:

★ ★ ★ ★ ★

[Sign in to rate](#)

Description

Introduction to psychopharmacology

Sample (from 1 notes)

Cards are customizable! When this deck is imported into the desktop program, cards will appear as the deck author has made them. If you'd like to customize what appears on the front and back of a card, you can do so by clicking the Edit button, and then clicking the Cards button.

Text	fluoxetine, sertaline, citalopram are examples of {{c1:: SSRJ}}
Extra	any extra fun facts
Tags	

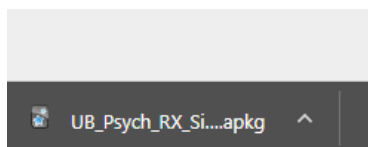
Download

After the file is downloaded, double-click on it to open it in the desktop program.

At this time, it is not possible to add shared decks directly to your AnkiWeb account - they need to be added from the desktop then synchronized to AnkiWeb.

[Write a Review](#)

10. Hit Download, and then double click the file. This should automatically open the Anki program and bring you to the deck.



11. Enjoy!