

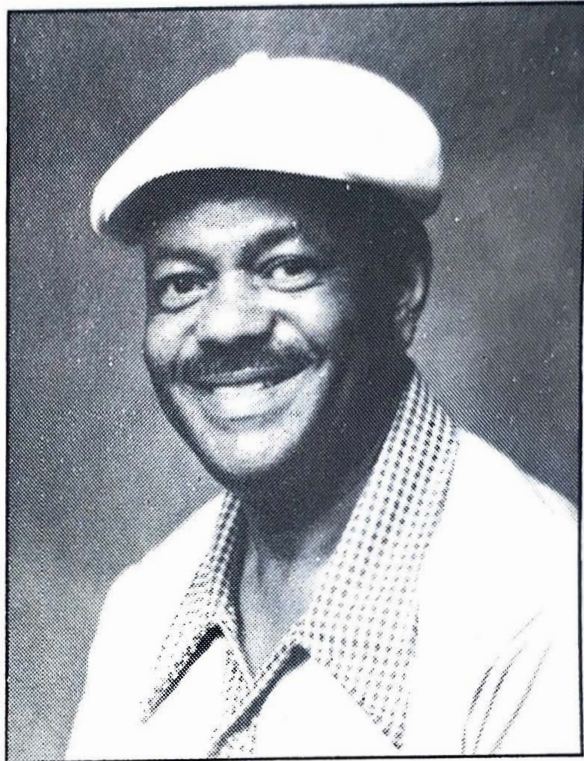
THE CELEBRATION

— of the life of —

Arthur Greene, Sr.

1921

1986



THURSDAY, FEBRUARY 6, 1986

1:00 p.m.

BETHEL A.M.E. CHURCH

1525 Michigan Avenue

Buffalo, N.Y. 14209



The Reverend Eugene E. McAshan, Pastor

OBITUARY

Arthur Greene, Sr., departed this life on Saturday, February 1, 1986 in the Veterans Hospital.

He was born in Calhoun Falls, South Carolina on July 21, 1921 to Moses Allen and Emma Greene. He was one of eight children.

He came to Buffalo, New York in 1936, joined the Army, serving in World War II. He was united in holy matrimony to Alberta Johnson in 1947. To this union, four children were born, one girl and three boys.

Arthur learned the meat cutting trade in Detroit, Michigan and after separating from the Service, he opened and operated Arts Meat Market on Michigan and Glenwood Avenues in Buffalo, New York from 1958 to 1978.

He joined Bethel A.M.E. Church under Reverend Harry J. White in 1952 and became active in the Bethel Federal Credit Union, serving on the Credit Committee for twenty-five years.

He leaves to cherish his memory, a loving wife: Alberta; one daughter: Emma Greene; three sons: Arthur Greene, Jr. (Aundra), Anthony Greene and P.F.C. Kevin Greene (Deborah); eight grandchildren: Daryl, Ayana, Jamil, Fareed, Kaliel, Tan diwe, Kevin, Jr. and Megan; four brothers: Clyde Allen (Luvenia), Fred Allen (Hattie) of N.Y.C., Hayward Allen (Daisy) of Teaneck, N.Y., Frank Allen (Dorice) of Enid, Oklahoma; three sisters: Ruth Joseph (deceased 1/30/86) and Helen Allen of N.Y.C., Doris Allen of Detroit, Michigan, also a host of aunts, uncles, nieces, nephews, other relatives and friends.

*"A seed was planted in the forest where sunshine and rain were free —
The roots went deep in fertile soil and there became a tree.
The branches of that tree grew tall.
The leaves were firm and green,
The shadow of that great tall tree could always be seen . . .
Then a chilling wind came in and caused the branches to sway
A stronger wind came in one day and blew the tree away."*

— The Family

ORDER OF SERVICE

†

Organ Prelude

Processional

Congregational Hymn:

"O Thou In Whose Presence My Soul Takes Delight"

Invocation Elder Claude Atchinson

Choral Response

Choral Response "Hush, Hush, My Soul"

Selection The Bethel Chorus

Scripture Readings:

The Psalms

The Gospel

Solo Brother Henry Nance
"Precious Lord"

Tribute Bethel Federal Credit Union
Sister Geneva M. Allen

Remarks

Selection The Bethel Chorus

Obituary Sister Pearl Richardson

Acknowledgments

Solo Sister Isabelle Atchinson

Eulogy Pastor McAshan

Recessional "Going Up Yonder"

Interment Forest Lawn Cemetery

Benediction

“When I Must Leave You”

*When I must leave you for a little while,
Please do not grieve and shed wild tears
And hug your sorrow to you through the years.
But start out bravely with a gallant smile,
And for my sake and in my name
Live on and do all things the same.
Feed not your loneliness on empty days
But fill each waking hour in useful ways.
Reach out your hand in comfort and in cheer.
And I in turn will comfort you and hold you near.
And never, never be afraid to die,
For I am waiting for you in the sky.*

— Helen Steiner Rice

... Pall Bearers ...

Members of Bethel Federal Credit Union

... Acknowledgments ...

The family of the late Arthur Greene, Sr. wishes to express thanks for your many acts of kindness shown to us during this, our hour of sorrow.

God bless you all.

Arrangements:

Thomas T. Edwards Funeral Home, Inc.