

# PEERS2K Project Newsletter

Social Development Lab | University at Buffalo, SUNY

Dear Families, Teachers, and Directors,

I hope you had a great summer! This past year was busy for our PEERS2K Project. We had so much fun catching up with our children who transitioned into kindergarten! It was great to hear about the new adventures they have experienced. This year we also recruited a fourth and final group of preschoolers! We loved meeting our new preschoolers and their families.

We want to thank you all for your dedication and support. We are extremely grateful for all your help in completing our surveys and interviews. We would also like to thank all the families that have completed a psychophysiology appointment this summer!

In addition, we want to thank our school directors and teachers for going above and beyond to increase participation in our community. We could not do this project without everyone's active involvement and support!

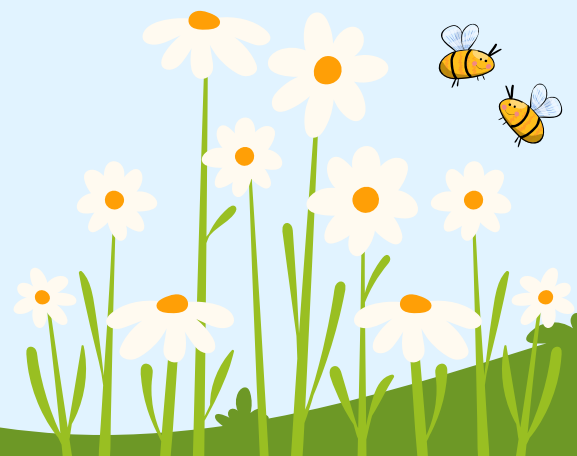
With gratitude,  
Dr. Jamie Ostrov  
Director, UB Social Development Lab

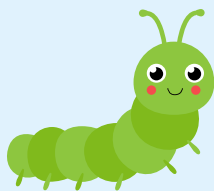
## PEERS2K YEAR FOUR SUMMARY:

Children Participating: 107  
Preschools Participating: 50  
Kindergartens Participating: 24  
Interviews Completed: 75  
Physiology Appointments: 50

## CONTACT US:

Phone: (716) 645-0213  
Email: [devlab@buffalo.edu](mailto:devlab@buffalo.edu)  
<https://ubwp.buffalo.edu/socialdevlab/>





## Preliminary Findings

PEERS2K is interested in learning about how early experiences of peer victimization “gets under the skin” and impacts children. To assess this, we invite families to participate in physiology sessions during which we measure heart rate, respiration, and sweat on kids’ fingers while they watch developmentally appropriate videos of characters being socially excluded. Recent findings that were presented by Dr. Jamie Ostrov at the International Society for Research on Aggression World Meeting (Munich, Germany) showed a trend between relational victimization (i.e., social exclusion) in preschool and breathing/heart rate reactivity when watching a puppet be socially excluded.



## What is next for PEERS2K?



If your child will be transitioning to kindergarten this fall, we will be contacting you to obtain your child’s kindergarten teacher’s information. We will ask kindergarten teachers for brief teacher reports for which we pay them.

Please contact us with this information via email at [devlab@buffalo.edu](mailto:devlab@buffalo.edu), or you may click [here](#)



## Lab Updates

- **Bri Memba** has completed her Clinical Psychology Doctoral Internship at University of Chicago Medicine (UCM) and received her Ph.D. in Clinical Psychology.
- **Gretchen Perhamus** has passed her dissertation defense, has begun her internship at The Medical University of South Carolina (MUSC), and has been awarded the Society of Clinical Child and Adolescent Psychology APA Division 53 2024 Student Achievement Award – Late Stage Graduate.
- **Maggie Azu** presented a poster at The International Society for Research on Aggression World Meeting (Munich, Germany), has passed her 2nd-year project proposal, and received the Psychological Association of Western New York Scholarship Award for Racial/Ethnic Minority Doctoral Candidates in Clinical/Counseling Psychology.
- **Katy Gardner** presented a poster at The International Society for Research on Aggression World Meeting (Munich, Germany) and has passed her 2nd year project proposal.

- **Olivia Bell** will be pursuing her Ph.D. in Developmental Psychology at Penn State University.
- **Sarah Lucas** will be pursuing her Ph.D. in Education with a specialization in Applied Developmental Science at The University of North Carolina – Chapel Hill.
- **Emily Hong** will be joining us as a Ph.D. student in Clinical Psychology this fall and most recently worked at the Yale Child Study Center.
- We also welcome 2 new staff members to the lab: **Hannah Dickinson** (Buffalo State University) and **Ella Rivet** (Western University)

How many butterflies  
can you find?



## Lab Graduates

**Lexi Holzman, Amy Maslin, Jenny McCarthy, and Zoey Morrisey** graduated from UB this spring. Amy is now working on the ABCD Study at The Medical University of South Carolina (MUSC). Jenny will be continuing her education at UB to receive her master's in social work. Zoey will be working at the Summit Center as a teacher assistant while she applies to graduate school.

## Lab Publications

Lent, M. C., Perry, K. J., Perhamus, G. R., Buck, C., Murray-Close, D., & Ostrov, J. M. (2024). Is autonomic functioning distinctly associated with anxiety and unsociability in preschoolers?. *International Journal of Psychophysiology*. doi:10.1016/j.ijpsycho.2024.112343

Perhamus, G., Ostrov, J. M., & Murray-Close, D. M. (2024). Aggression and irritability in middle childhood: Between and within-person associations. *Journal of Clinical Child and Adolescent Psychology*. 53(2), 184- 198. <https://doi.org/10.1080/15374416.2023.2272941>

### Principle Investigators

Dr. Jamie Ostrov  
jostrov@buffalo.edu  
(716)645-3680

Dr. Dianna Murray-Close  
(co-PI)  
Professor, University of Vermont



### Research Staff

Kristin Tymchak Carrol  
Jules Zajdel  
Hannah Dickinson  
Ella Rivet



### Undergraduate Research Assistants

Jassani Ruiz, Amy Maslin,  
Katherine Kremer, Zoey Morrisey,  
Lexi Holzman, Jenny McCarthy,  
Rowan Radel, Riley Godwin,  
Gabby Markham, Lauren Montagne

### Graduate Students

Katy Gardner (PEERS2K  
and FRIENDS Project  
Director)

Maggie Azu (ECFP-3  
Project Director)

